



GOVERNO DO ESTADO DE SERGIPE
SECRETARIA DE ESTADO DE EDUCAÇÃO DO ESPORTE E DA CULTURA
DIRETORIA DE EDUCAÇÃO DE ARACAJU
CONSERVATÓRIO DE MÚSICA DE SERGIPE

CADERNO DE ESTUDO DE LEITURA MÉTRICA E SOLFEJO

Curso de Formação Inicial em Música
Módulo II

LEITURA MÉTRICA

A)

Exercise A consists of five measures in 2/4 time. The treble clef part starts with a quarter note G4, followed by an eighth note A4, a beamed eighth note B4, and a quarter note C5. The bass clef part starts with a quarter note G3, followed by an eighth note A3, a beamed eighth note B3, and a quarter note C4. The second measure continues with a quarter note D4, an eighth note E4, a beamed eighth note F4, and a quarter note G4. The third measure has a quarter rest, a quarter note G4, a quarter rest, and a quarter note F4. The fourth measure has a quarter note G4, an eighth note A4, a beamed eighth note B4, and a quarter note C5. The fifth measure has a quarter rest, a quarter note G4, a quarter rest, and a quarter note F4.

Exercise A continues with five more measures. The sixth measure has a quarter rest, a quarter note G4, an eighth note A4, a beamed eighth note B4, and a quarter note C5. The seventh measure has a quarter note D4, an eighth note E4, a beamed eighth note F4, and a quarter note G4. The eighth measure has a quarter note G4, a quarter note F4, a quarter note E4, and a quarter note D4. The ninth measure has a quarter note D4, a quarter note C4, a quarter note B3, and a quarter note A3. The tenth measure has a quarter note G3, a quarter note F3, a quarter note E3, and a quarter note D3.

B)

Exercise B consists of five measures in 2/4 time. The treble clef part starts with a quarter rest, a quarter note G4, an eighth note A4, a beamed eighth note B4, and a quarter note C5. The bass clef part starts with a quarter rest, a quarter note G3, an eighth note A3, a beamed eighth note B3, and a quarter note C4. The second measure has a quarter note D4, an eighth note E4, a beamed eighth note F4, and a quarter note G4. The third measure has a quarter note G4, a quarter note F4, a quarter note E4, and a quarter note D4. The fourth measure has a quarter note D4, a quarter note C4, a quarter note B3, and a quarter note A3. The fifth measure has a quarter note G3, a quarter note F3, a quarter note E3, and a quarter note D3.

C)

Exercise C consists of five measures in 2/4 time. The treble clef part starts with a quarter note G4, a quarter note A4, a quarter note B4, and a quarter note C5. The bass clef part starts with a quarter note G3, a quarter note F3, a quarter note E3, and a quarter note D3. The second measure has a quarter note D4, a quarter note C4, a quarter note B3, and a quarter note A3. The third measure has a quarter note G4, an eighth note A4, a beamed eighth note B4, and a quarter note C5. The fourth measure has a quarter note D4, a quarter note C4, a quarter note B3, and a quarter note A3. The fifth measure has a quarter note G4, an eighth note A4, a beamed eighth note B4, and a quarter note C5.

D)

Exercise D consists of five measures in 2/4 time. The treble clef part starts with a quarter note G4, an eighth note A4, a beamed eighth note B4, and a quarter note C5. The bass clef part starts with a quarter note G3, an eighth note A3, a beamed eighth note B3, and a quarter note C4. The second measure has a quarter note D4, a quarter note C4, a quarter note B3, and a quarter note A3. The third measure has a quarter rest, a quarter note G4, a quarter rest, and a quarter note F4. The fourth measure has a quarter rest, a quarter note G4, a quarter rest, and a quarter note E4. The fifth measure has a quarter note G4, an eighth note A4, a beamed eighth note B4, and a quarter note C5.

E)

Musical score for exercise E, measures 1-5. The score is written in 3/4 time. The treble clef staff contains the melody, and the bass clef staff contains the bass line. The melody starts with a quarter rest, followed by a quarter note G4, a quarter note A4, and a quarter note B4. The bass line starts with a quarter rest, followed by a quarter note G3, a quarter note A3, and a quarter note B3. The piece concludes with a double bar line and repeat signs.

Musical score for exercise E, measures 6-9. The treble clef staff contains the melody, and the bass clef staff contains the bass line. The melody starts with a quarter note G4, a quarter note A4, and a quarter note B4. The bass line starts with a quarter note G3, a quarter note A3, and a quarter note B3. The piece concludes with a double bar line and repeat signs.

F)

Musical score for exercise F, measures 1-5. The score is written in 3/4 time. The treble clef staff contains the melody, and the bass clef staff contains the bass line. The melody starts with a quarter note G4, a quarter note A4, and a quarter note B4. The bass line starts with a quarter note G3, a quarter note A3, and a quarter note B3. The piece concludes with a double bar line and repeat signs.

Musical score for exercise F, measures 6-9. The score is written in 4/4 time. The treble clef staff contains the melody, and the bass clef staff contains the bass line. The melody starts with a quarter note G4, a quarter note A4, and a quarter note B4. The bass line starts with a quarter note G3, a quarter note A3, and a quarter note B3. The piece concludes with a double bar line and repeat signs.

G)

H)

D)

The image displays a musical score for exercise D, consisting of four staves. The first staff is a treble clef in 4/4 time, containing a melodic line with eighth and quarter notes. The second staff is a treble clef starting at measure 6, containing a melodic line with quarter and eighth notes. The third staff is a bass clef in 4/4 time, containing a bass line with eighth and quarter notes. The fourth staff is a bass clef starting at measure 6, containing a bass line with quarter and eighth notes.

SOLFEJO

FORMAÇÃO INICIAL II

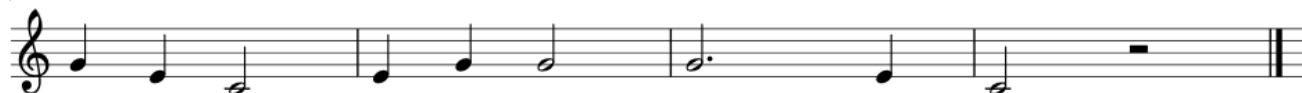
A



4



7



B



17



C



25



29



D)

10

E)

28

F)

43

48

G)



16



29 H)



44



J)



12



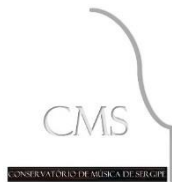
K)

26



35





Governo do Estado de Sergipe
Secretaria de Estado de Educação do Esporte e da Cultura
Diretoria de Educação de Aracaju
Conservatório de Música de Sergipe

Carlos Heitor Rocha Mendonça
(Diretor)

Maria Betânia Santos
(Secretária)

Joel Magalhães, Kadja Emanuelle e Simone Lima
(Coordenadores)

Antônio Souza, Bruno Duarte, Leandro Barbosa, Manoel Neto, Teresa Criscuolo e Thiago de Sá
(Professores da Disciplina Cognição e Métrica Musical II – Formação Inicial II)

Conservatório de Música de Sergipe

Rua Boquim, 313. Aracaju/SE
Telefone: (79)3179-1875 /
Site: www.cmse.com.br
E-mail: cmse.seed@seed.se.gov.br
www.facebook.com/conservatoriodemusicadesergipe
Instagram: @conservatoriosergipe